



solar modules
ORANGE

OSM-P230
OSM-P235
OSM-P240
OSM-P245
OSM-P250



OSM-P230 | OSM-P235 | OSM-P240 | OSM-P245 | OSM-P250



High module conversion efficiency



Easy installation & handling for all solar applications



High mechanical load resistance up to 5400 Pa



Positive tolerance 3%



Plug & Play connectors



TÜV Certified EC Conformity



ISO 9001
OHSAS 18001
ISO 14001



PV Standards:
IEX 61215:2005
IEC 61730:2005
UL 1703



High Transmission, low Iron Tempered Glass



Bypass Diodes Protection



Salt Mist Test & Ammonia Resistance Test



Peak power: 230-250W

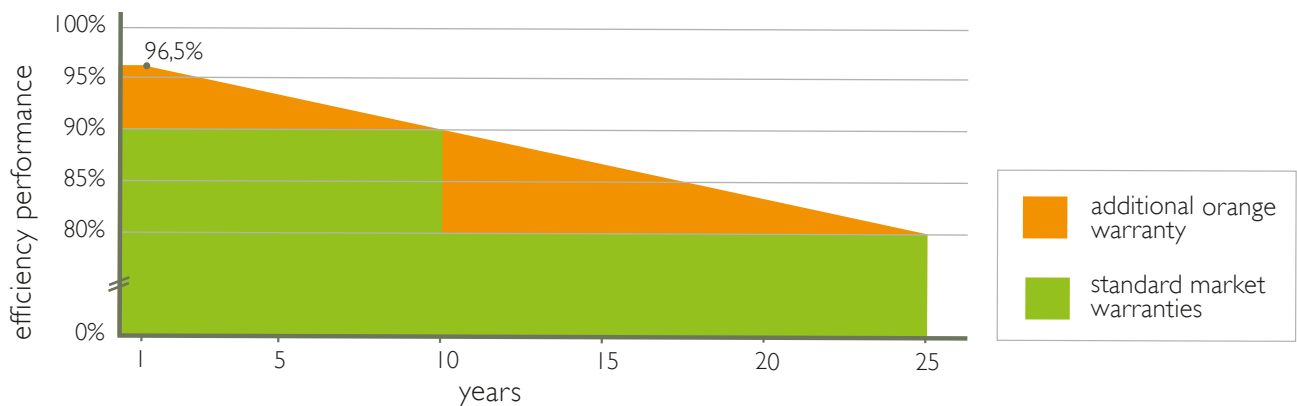
ORANGE TRIPLE + WARRANTY

1. 12 years product warranty of manufacturing defects
2. 12 year 90%, 25 year 80% power output efficiency
3. 25 year linear power output efficiency

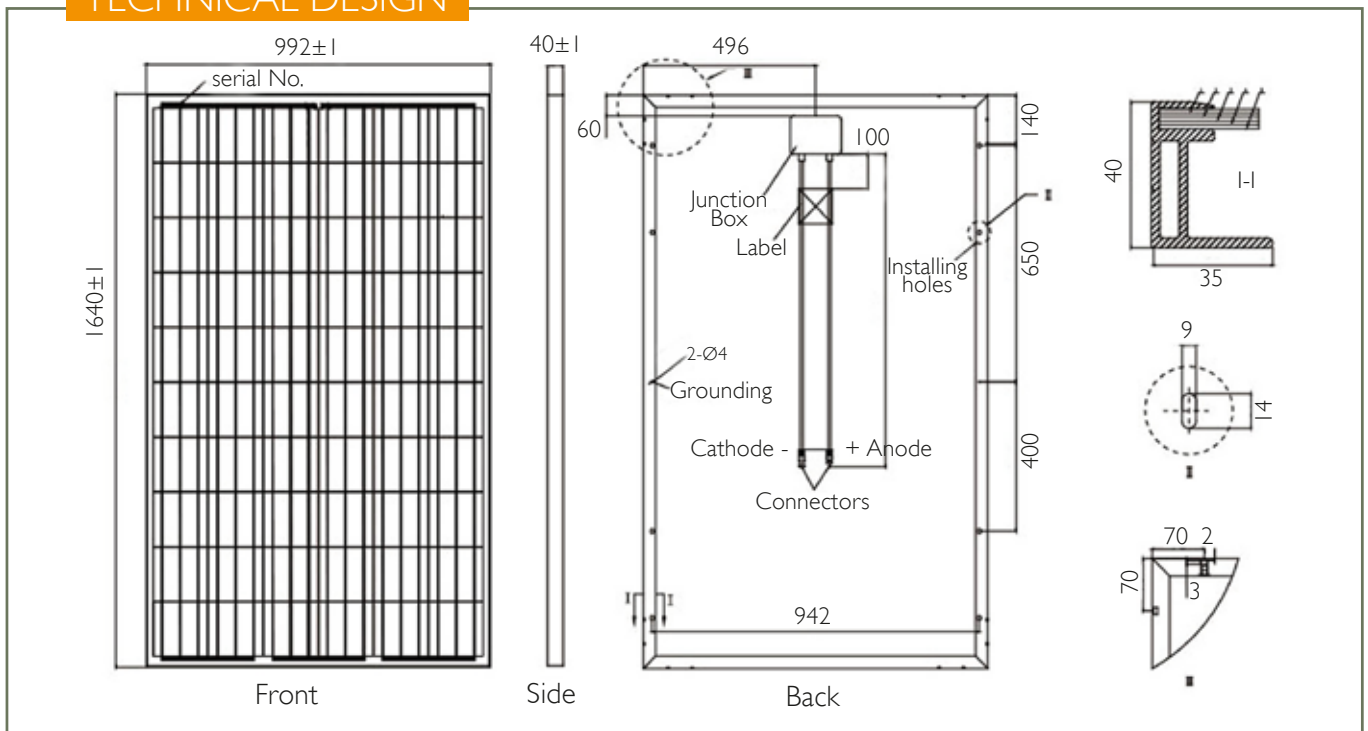
Plus a no discussion money back guarantee within 14 days after purchase.



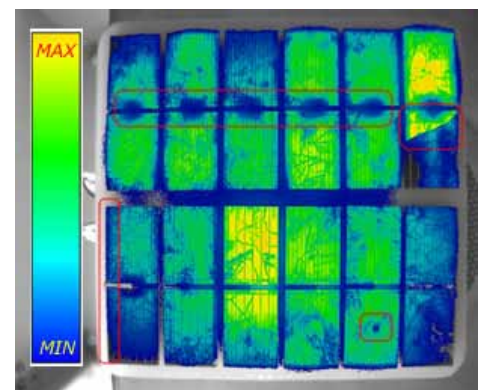
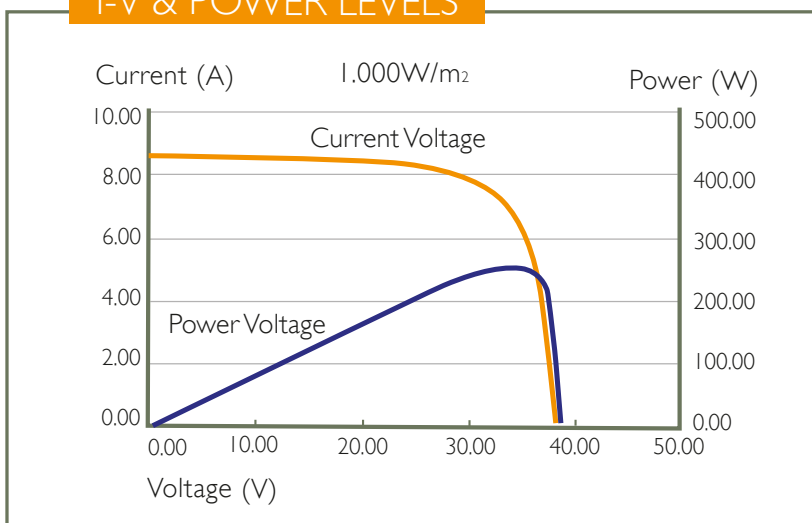
ORANGE LINEAR PERFORMANCE WARRANTY



TECHNICAL DESIGN

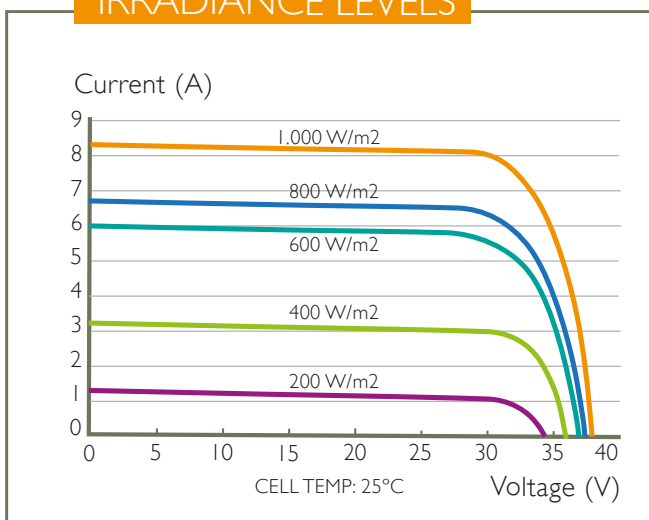


I-V & POWER LEVELS

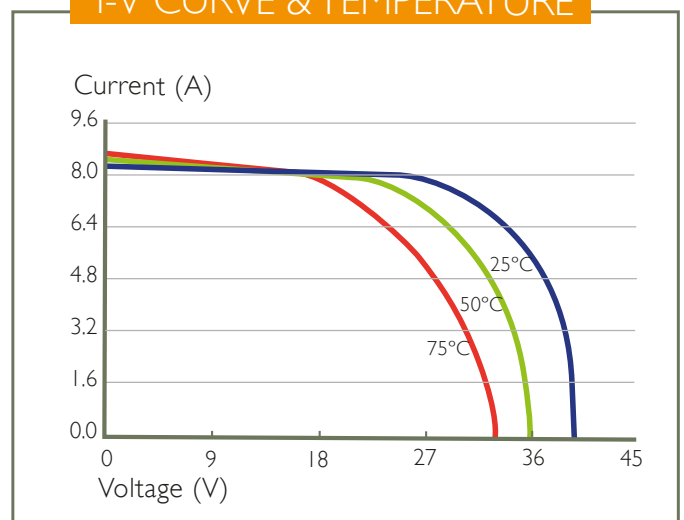


Orange panels are 100% verified through Electro-Luminescence (EL) Tests, Flash Tests and Thermal-Infrared Inspections.

IRRADIANCE LEVELS



I-V CURVE & TEMPERATURE



ELECTRICAL PERFORMANCE

Module Type	OSM 156P 60-230	OSM 156P 60-235	OSM 156P 60-240	OSM 156P 60-245	OSM 156P 60-250
Maximum Power at STC (Pmax)	230 Wp	235 Wp	240 Wp	245 Wp	250 Wp
Maximum Power Voltage (Vmp)	29.6V	29.8V	30.0V	30.2V	30.4V
Maximum Power Current (Imp)	7.78 A	7.89 A	8.01 A	8.12 A	8.23 A
Open-circuit Voltage (Voc)	36.8V	36.9V	37.3V	37.4V	37.6V
Short-circuit Current (Isc)	8.35 A	8.47 A	8.56 A	8.69 A	8.81 A
Cell Efficiency (%)	16.00 %	16.50 %	17.00 %	17.25 %	17.50 %
Module Efficiency (%)	14.14 %	14.44 %	14.75 %	15.06 %	15.37 %
Operating Temperature (°C)	-40°C, +85°C				
Maximum System Voltage	600 V (UL) / 1000V (IEC) DC				
Maximum Rated Current Series	15A				
Power Tolerance	0, +5W				
Temperature Coefficients of Pmax	-0.48% / °C				
Temperature Coefficients of Voc	-0.33% / °C				
Temperature Coefficients of Isc	-0.04% / °C				
Nominal Operating Cell Temperature (NOCT)	45±2°C				

MECHANICAL CHARACTERISTICS

Cell Type	Poly-crystalline 156 x 156 mm. (6 inch)
Nr. of Cells	60 (6 x 10)
Dimensions	1640 x 992 x 40 mm. (64.57 x 39.08 x 1.57 inch)
Weight	19,5 kg. (43.0 lbs.)
Front Glass	3,2 mm, High Transmission, Low Iron, Tempered Glass
Frame	Anodized Aluminium Alloy
Junction Box	TP65 Rated
Output Cables	UL12 AWG / TUV / 1x4,0 mm ² , Length: 900 mm.

STANDARD PACKAGING

Quantity / Pallet	23 pcs / pallet
Loading Quantity	276 pcs / 20 ft or 644 pcs / 40 ft

PERFORMANCE

Warranty	90% / 12 year, 80% / 25 year power output efficiency linear 25 year power output efficiency Free from defects in materials and workmanship for 12 years
----------	---